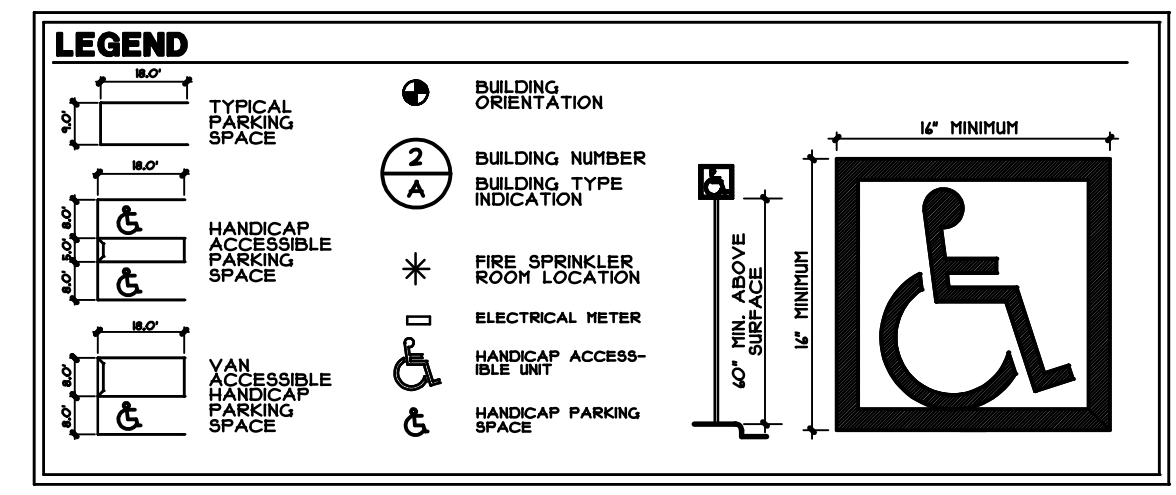
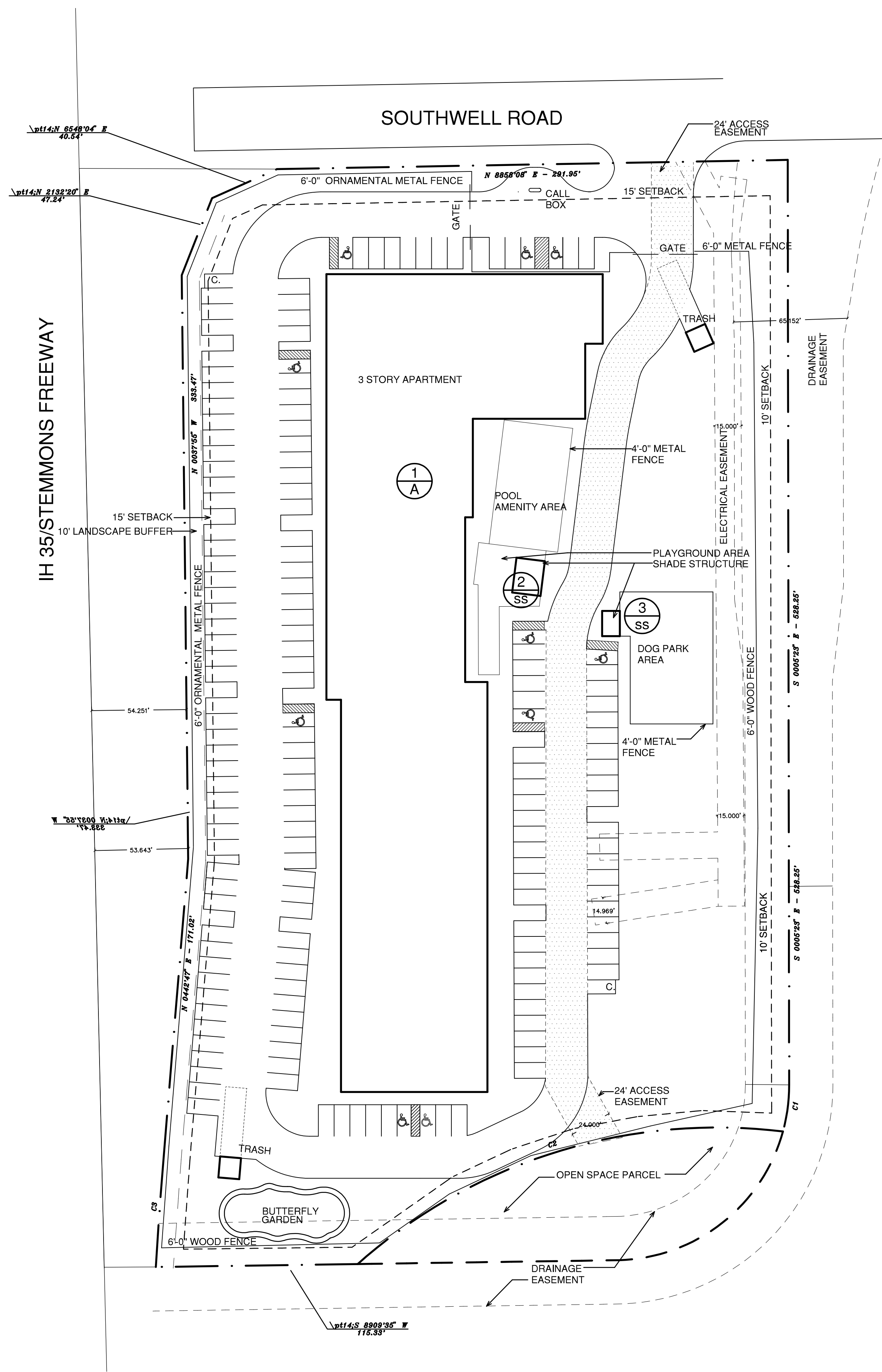


<b>SITE DATA</b>	
EXISTING ZONING	IR
PROPOSED ZONING	PD
<b>SITE DENSITY</b>	
SITE AREA	4.933
TOTAL UNITS	87
MAX. ALLOWABLE DENSITY	18 UNITS/ACRE
MAX. ALLOWABLE LOT COVERAGE	60%
BUILDING HEIGHT	50' MAX, (3 STORY) APARTMENTS 15' MAX, (1 STORY) SS (SHADE STRUCTURES)
<b>PARKING REQUIRED</b>	
TOTAL SPACES REQUIRED	163
(42) ONE BEDROOM X 1	42
(36) TWO BEDROOM X 2	72
(9) THREE BEDROOM X 3	27
(87) GUEST X .25	22
<b>PARKING PROVIDED</b>	
REGULAR SPACES	155
COMPACT SPACES	2
HC SPACES	9
TOTAL SPACES PROVIDED	166

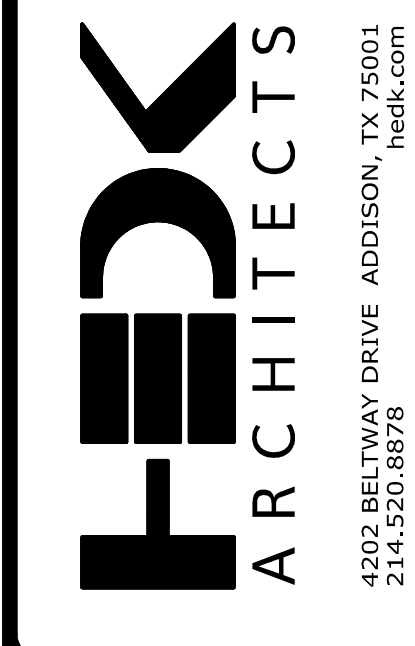
<b>PROGRAM DATA</b>					
APARTMENT BUILDING					
UNIT	DESCRIPTION	NO. UNITS	UNITS %	NET. AREA	NET TOTAL
A1	ONE BEDROOM, ONE BATH	42	48.28%	804 SF	33,768
B1	TWO BEDROOM, TWO BATH	36	41.38%	960 SF	34,560
C1	THREE BEDROOM, THREE BATH	9	10.34%	1,154 SF	10,386
TOTALS		87	100.00%		78,714
CLUB	CLUB/FITNESS/LEASING				3,600



**1** DEVELOPMENT PLAN - Z190-204  
SCALE: 1:40

REVISIONS

**DALLAS STEMMONS APTS**  
DALLAS, TEXAS



DATE	06-10-2020
PROJECT	20142
SHEET NUMBER	

**A1-01**  
DEVELOPMENT PLAN

COPYRIGHT © HECK ARCHITECTS ALL RIGHTS RESERVED